



# NanoSmart<sup>™</sup> SERIES Water Filtration

QCM350-MP • HC416-MP • HC610-MP  
HC614-MP • HC620-MP



## NanoSmart<sup>™</sup> - Tastefully Crafted Filtration.

### NanoSmart Overview

Kineticopro's innovative NanoSmart water filters remove a wide range of pathogens and contaminants from your water. This is achieved by combining our unique ultra porous hollow carbon media and our electro-adsorptive pleated material. This combination is engineered to reduce microbial cysts and chemicals such as chlorine, chloramines, pharmaceuticals, and more. Our innovative technologies combine to deliver clean and safe ingredient water and elevate the guest experience.



#### Guest Experience:

- Helps to reduce contaminants such as (but not limited to) bacteria, trace pharmaceuticals to deliver exceptional water quality
- Reduces undesirable taste and odor issues from chlorine and chloramines to deliver a consistent high-quality beverage and ice experience.



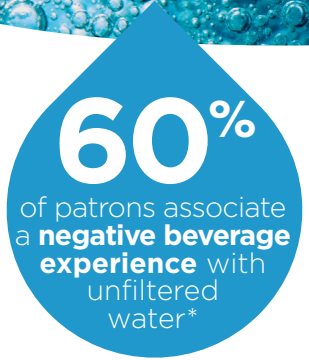
#### Operational Efficiency

- Filters are certified by NSF to NSF/ANSI Standard 42 for applicable drinking water requirements.
- Delivers high capacities and flow rates while producing minimal pressure drop, enhancing the performance of your equipment
- Multi-head manifold configurations available in our HPF, KPMF and SMF filter designs
- Durable engineered polymer cartridge contains 100% activated hollow carbon with no binding agents, optimizing equipment performance over the life of the filter



#### Equipment Protection:

- Filters contain a combination of electro-adsorptive pleated media and hollow carbon to remove additional dissolved contaminants.
- Reduces contaminants and particulates to extend equipment life, minimizing service calls and downtime.
- Innovative filter design does not clog easily and remains odorless even if not utilized for several days.



### APPLICATION USE



Fountain



Ice Machine



Drinking water



Water/Juice Dispensing

## NANOSMART FILTERS HELP TO REMOVE DISINFECTANTS, AND CONTAMINANTS, SUCH AS:

- Chlorine
- Chloramine
- Bacteria
- Endotoxins
- Polysaccharides
- Trace Pharmaceuticals
- Particulates



## SPECIFICATIONS

	QCM HC310-MP	HC416-MP	HC610-MP	HC614-MP	HC620-MP
<b>Primary Applications</b>	Fountain, Ice Machine, Drinking Water, Water/Juice Dispensing				
<b>Filter Media</b>	Activated hollow carbon & Electro-adsorptive media				
<b>System Size (w x d x h) in</b>	8.5" x 5" x 15"	10" x 5.5" x 21"	14" x 9" x 19"	14" x 9" x 23"	14" x 9" x 29"
<b>System Shipping Weight</b>	4 lb	4 lb	13 lb	15 lb	17 lb
<b>Manifold Configuration</b>	Single Manifold	HPF Single, Double, Triple & Quad Systems	KPRO Single, Double, Triple Quad systems		
<b>Micron Rating</b>	3	1	1	1	1
<b>NSF/ ANSI Standard 42 (Chlorine, Taste &amp; Odor)</b>	✓	✓	✓	✓	✓
<b>NSF/ ANSI Standard 42 (Particulate Class I)</b>	-	✓	✓	✓	✓
<b>Chlorine Capacity (gal.)/ Flow Rate (gpm)</b>	20,000 gal @ 1.7 gpm	40,000 gal @ 2.5 gpm	50,000 gal @ 4 gpm	75,000 gal @ 6 gpm	100,000 gal @ 8 gpm
<b>Chloramine Capacity* (gal.)/ Flow Rate (gpm)</b>	-	-	-	5,200 gal @ 1.7gpm	20,000 gal @ 1.7gpm

\*Tested by 3rd party laboratory to the NSF/ANSI Standard 42

EPA Est. No. 92879-GA-1

## EFFORTLESS TOTAL WATER CARE

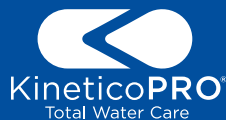
KineticoPRO® offers a complete range of commercial water treatment solutions. Based on a per-location water analysis, we will work with you to prescribe the ideal water filtration, softening, and reverse osmosis solutions to optimize your water quality and protect your equipment.



POE & POU  
Water Softeners

Water Filtration

RO Systems



1.800.321.5022  
www.KineticoPRO.com  
WaterCare@KineticoPRO.com

©2024 Kinetico Incorporated. All Rights Reserved.  
Kinetico Incorporated, 3980 Lakefield Ct. Suwanee, GA 30024  
Made in U.S.A. NSS SERIES\_09-24